

# Badger® Model 330 Set-Point Controller

## Booster Pump Control

# Application Brief

### PROBLEM

Many sprinkler systems operating on marginal pressure would benefit greatly from the installation of a booster pump to increase pressure by 20 or 30 psi.

Problems facing the installer can include a great distance from the sprinkler controls to the pump itself, or simply too many obstacles in the proposed path of control wires to permit economical direct pump control. Pump control with pressure switches can be expensive and complicated, involving hydro-pneumatic tanks and time delays.

### SOLUTION

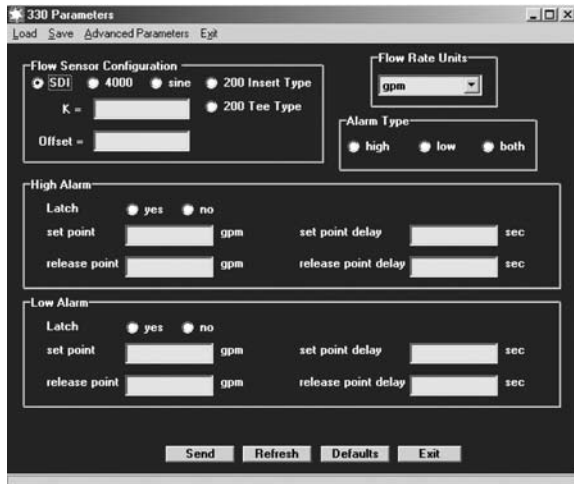
The Badger Meter Model 330 Relay Control, combined with a Badger Meter flow sensor, has all the features necessary to control a booster pump.

Once the installer has configured the Model 330's microcontroller using our Windows® based computer program, the Model 330 will differentiate between the small spray zones that don't need boosted pressure, and large rotor zones that do; turn on the pump only when needed. Programmable time delays and dead-band in the Model 330 keeps the pump from cycling. With the Model 330, the pump comes on only when you need it and stays on until the watering cycle is over.

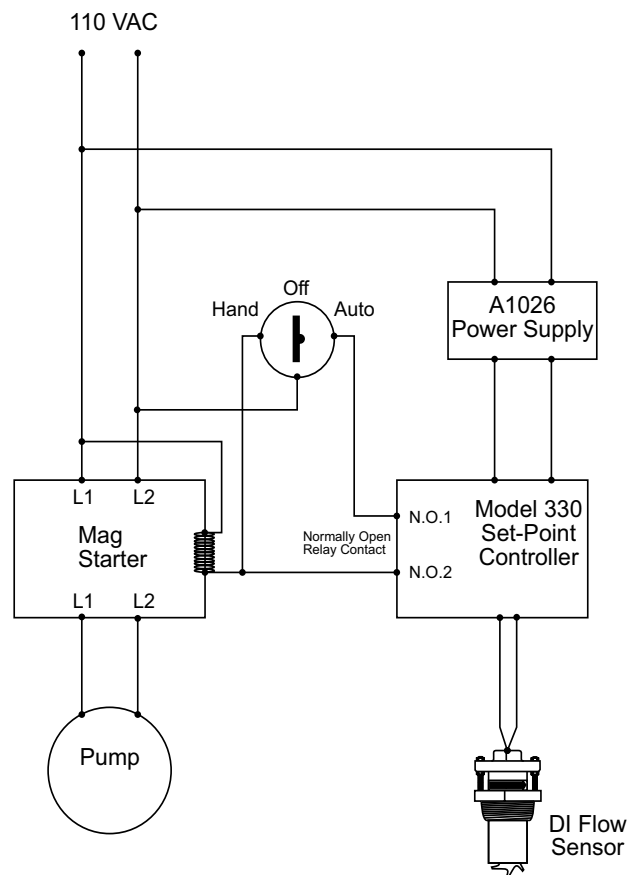
With a Model A330 Programming Kit (includes A301 cable and software) and a lap-top or personal computer, one can easily program an unlimited number of units in the field. The non-volatile memory saves programmed values indefinitely.

The Model 330 is small enough to be added to a pump control enclosure, and optional DIN Rail clips can make the installation easy and clean. Optional NEMA 4, or weather tight enclosures permit stand-alone installations.

Used with a Badger Meter flow sensor, the Model 330 Relay Control makes booster pump control easy. It is easy to install, easy to program, and easily the most reliable!



Sample Programming Screen



Badger® and Data Industrial® are registered trademarks of Badger Meter, Inc. Windows® is a registered trademark of Microsoft Corporation.

DAB-012-01

4-09



Please see our website at [www.badgermeter.com](http://www.badgermeter.com) for specific contacts.

Copyright © Badger Meter, Inc. 2009. All rights reserved.

Due to continuous research, product improvements and enhancements, Badger Meter reserves the right to change product or system specifications without notice, except to the extent an outstanding contractual obligation exists.



**BadgerMeter, Inc.**

6116 E. 15th Street, Tulsa, Oklahoma 74112  
(918) 836-8411 / Fax: (918) 832-9962

[www.badgermeter.com](http://www.badgermeter.com)