

Badger ORION	Badger ORION Transmitter Remote Installation Bracket	Installation Data
---------------------	---	------------------------------

The following instructions are provided to properly install a Badger® ORION® transmitter in any indoor, outdoor, or pit application. Prior to beginning the installation procedure, ensure that the following items are available.

- Remote Installation Bracket Kit (RTR®), 64394-019
- Remote Installation Bracket Kit (ADE®), 64394-020
- Two customer-supplied screws
- Screwdriver and drill

Badger ORION Transmitter Remote Installation Bracket

The Badger ORION Remote Installation Bracket securely mounts a Badger ORION transmitter. For non-submerged indoor and outdoor applications, the installation bracket can also be used to enclose gel-cap, wire-splice connections to protect them from the environment and to prevent tampering in any indoor or outdoor non-metallic joist, wall or pit application.

Network Transmitter Installation

When a transmitter is installed on a basement set meter that is read by a network receiver, we recommend that the transmitter be installed with the radio transmitter mounted on the outside of the building or in the floor joist near the outside wall of the building for efficient propagation of the radio transmission.

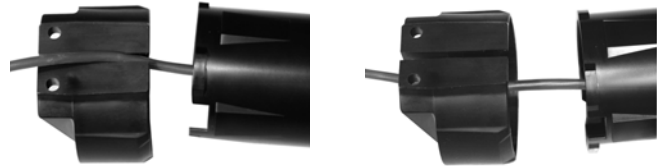


Installing the Bracket to Housing

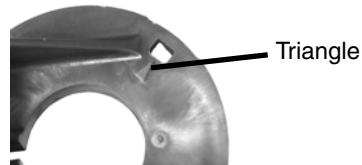
To install the bracket to the housing, follow these steps.

1. Place the encoder cable harness through the slit in the bracket, with the screw holes at the bottom.

Note: Carefully slide the cable harness through the slit in the bracket.



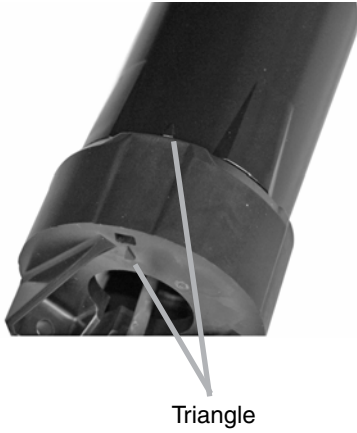
2. For non-submerged indoor and outdoor applications, splice connections together and wrap any cables inside the base of the housing. Splice connections made in pit environments require a pit field-splice kit, which can be ordered separately.
3. On the bottom of the installation bracket there is a small triangle aligned with the small hole. This triangle is used to properly align the transmitter to the installation bracket.



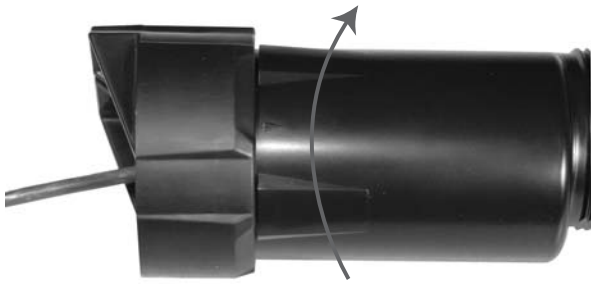
On the Badger ORION transmitter there is a small triangle printed on the lower side of the housing.



4. Align the two triangles and push the bracket and transmitter together.



5. With the installation bracket in one hand and the housing in your other hand, hold the bracket still and twist the housing (approximately 1/4 turn), until it clicks and locks into place.



Installing the Badger ORION Transmitter Assembly

To install the transmitter assembly, follow these steps.

1. Align the Badger ORION transmitter and the installation bracket with the antenna facing upwards. (See picture below.)
2. Using two customer-supplied screws, secure the transmitter and installation bracket assembly to a non-metallic joist or wall.



ADE®, Badger®, ORION® and RTR®, are registered trademarks of Badger Meter, Inc.



Please see our Web site at
www.badgermeter.com
for specific contacts.



BadgerMeter, Inc.

P.O. Box 245036, Milwaukee, WI 53224-9536
800-876-3837 / Fax: 888-371-5982

infocentral@badgermeter.com • www.badgermeter.com