

DESCRIPTION

APPLICATIONS: The Badger® Network Reader Software is designed to collect information from Badger's ORION® Gateway Receivers, which are integrated into third party fixed networks. The Badger ORION Gateway Receiver stores information from multiple Badger ORION transmitters connected to meters and will send the data when requested. The data is requested by the Badger Network Reader Software that runs on a Windows® based computer with network access.

The Badger Network Reader Software will make a connection using the IP address of the Badger ORION Gateway Receiver and will save the transmitted data. A current reading, reading date and time, status codes, receiver IP address and transmitter serial # will be stored in a file on the PC for each reading collected. The Badger Network Reader Software provides the user with a myriad of standard reports as well as custom reporting capabilities.

OPERATION: Badger Network Reader Software by design is very powerful yet easy to use. Badger Network Reader allows for set up of the installed Badger ORION Gateway Receivers. It also allows the user to assign and schedule data pulls from the network. The user can then define and run queries of the stored transmitter data. Lastly, the Badger Network Reader also has the ability to easily interface with Badger® CONNECT for load/unload processing, demand reading, and billing purposes.

The following reports are available for the user's system analysis:

- Leak Detection Report
- Tamper Detection Report
- Unauthorized Use Report
- No Use/Stopped Meter Report
- High/Low Use Report
- Meter Use Report
- Group Use Report
- Exception Report
- Receiver Coverage Report
- Reception Signal Strength Report

INSTALLATION: Comprehensive training and ongoing support are

included in the Badger Network Reader Software package.

MAINTENANCE: Software and hardware maintenance agreements are available to provide years of dependable service and access to future software upgrades.

SYSTEM REQUIREMENTS

General

CPU - Pentium	1 GHz or above
Operating Systems	Windows® 2000 Pro or Windows XP Pro
Hard Disk Drive	20 GB or higher available
RAM	1 GB or higher available
CDROM Drive	For software installation
Monitor	17" or larger
Network Adapter	For connecting to internal network or network hub

Optional

To insure uninterrupted power, the computer may be plugged into a Backup Power Supply.

Backup Consideration

A means to back up **Badger Network Reader** data must be provided. Options are; the local network, ZIP Drive, Read/Write CDROM or other type of removable media.

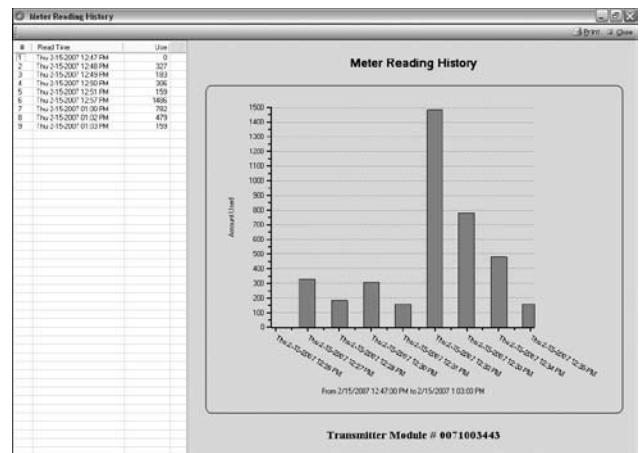
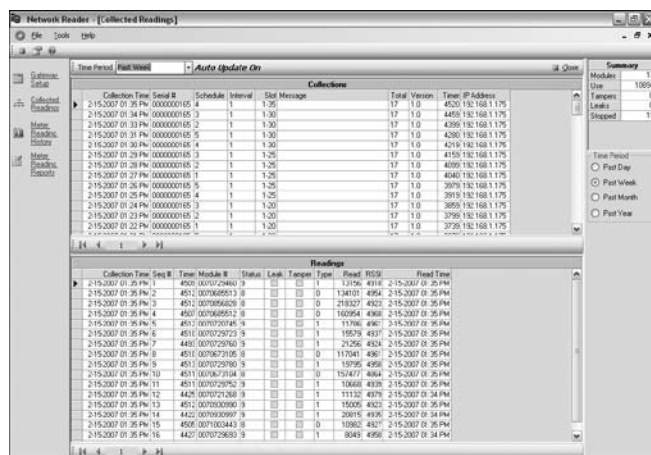
Support Consideration

Internet Capability for Technical Support WebEx™ connection is recommended.

Storage Requirements for 35,000 Meters – Daily Reads

100 Bytes of storage are required per read.

1 Day	3.5 MB
1 Month	105 MB
6 Months	630 MB
12 Months	1.26 GB
24 Months	2.52 GB



ORION® and Badger® are registered trademarks of Badger Meter, Inc. Windows® is a registered trademark of Microsoft Corporation. WebEx is a trademark of WebEx Communications, Inc.

BNR-T-01
9-07



Please see our website at
www.badgermeter.com
for specific contacts.



BadgerMeter, Inc.

P.O. Box 245036, Milwaukee, WI 53224-9536
(800) 876-3837 / Fax: (888) 371-5982
www.badgermeter.com