

DESCRIPTION

APPLICATIONS: For use in measurement of cold water in reclaimed water distribution systems. Meters are available for residential, commercial and industrial services where flow is in one direction only.

The meter and its internal components are for use in the measurement of non-potable water only. Caution must be exercised not to mingle non-potable and potable water meters and especially their internal components.

UTILITY IMPACTS: Utilities faced with rising water costs and limited water resources are developing non-potable, reclaimed water distribution systems. Accurate, dependable metering is needed to bill customers for these alternate supplies.

Special coloring and markings are designed to distinguish potable water meters from reclaimed water meters in accordance with current industry standards. The utility must develop appropriate operational procedures to ensure that potable water meters and reclaimed water meters and their internal components are not mingled.

WARRANTY: Due to the lack of a uniform definition of the composition of reclaimed water, the warranties associated with reclaimed water meters are different than the potable water Recordall® meter line. Please review the warranty statement for this important difference.



SPECIFICATIONS

- 5/8" - 2" Recordall® Disc Series Meters
- 1 1/2" - 20" Recordall® Turbo Series Meters

For meter specifications for each Recordall® size and type meter, see Technical Brief prepared for that specific meter.

Thermoplastic shroud and lid only.

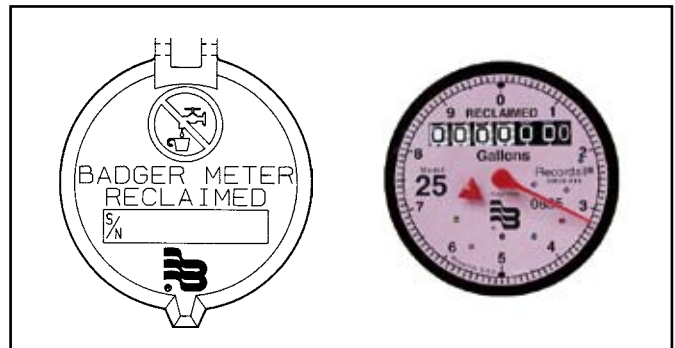
Special Markings Lavender color lid, shroud, register dial face, and cast iron bottom (5/8" through 1").

The word "RECLAIMED" is cast or engraved in the meter body and printed on the register dial face and lid. It is also cast or engraved on bronze covers and bottoms.

Non-potable water symbol on register lid.

Chamber assembly has designation for non-potable water only.

Register Type The Reclaimed water meter line supports the same types of registration and reading systems as the potable meter line.





Please see our website at
www.badgermeter.com
for specific contacts.

Due to continuous research, product improvements and enhancements, Badger Meter reserves the right to change product or system specifications without notice, except to the extent an outstanding bid obligation exists.



BadgerMeter, Inc.

P.O. Box 245036, Milwaukee, WI 53224-9536

(800) 876-3837 / Fax: (888) 371-5982

www.badgermeter.com