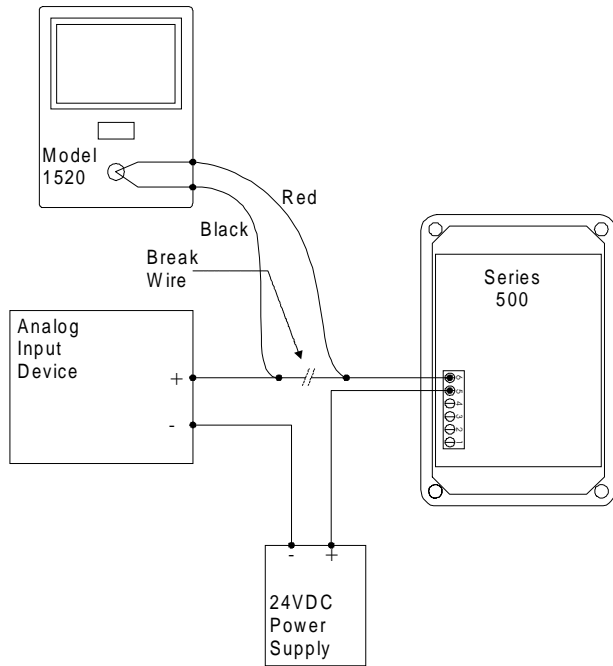


Model 1520-400 Wiring and Programming

The Model 1520-400 is a portable digital flow monitor powered by two 9 volt alkaline batteries. It differs from the 1500-000 in that it only accepts 4-20mA analog input signals.

The 1520-4200 must be scaled by entering the flow values represented by 4mA and 20mA from the output device.

Figure 1: Wiring 1520-400 in a existing analog loop



Electrical Wiring

Note: This Device is loop powered and will not source power.

1. Remove power from the loop
2. Disconnect the loop at a convenient point.
3. Place the 1500-400 in series with the other devices as shown in figure 1.
4. Repower the loop and read the flow rate or totalize flow.

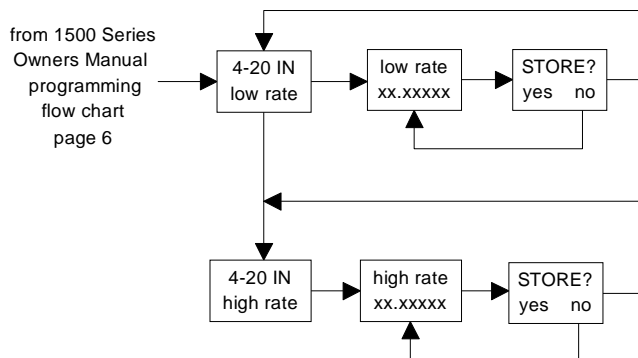
A fresh set of 9 volt alkaline batteries will provide approximately 10 hours of operation. For additional information refer to 1500 Owners Manual.

Programming

To select the units/pulse of totalizer pulse:

Press **Menu**, then **UpArrow — Enter — Enter**, then enter the flow represented by 4mA, then press **Enter** and answer the **STORE?** Question. Then press **DnArrow — Enter**, then enter the flow represented by 20mA, then press **Enter** and answer the **STORE?** Question. Press **Menu** Key Two times to return to **operation display**.

Analog Input Programming Flow Chart



PN#17028
11/24/97