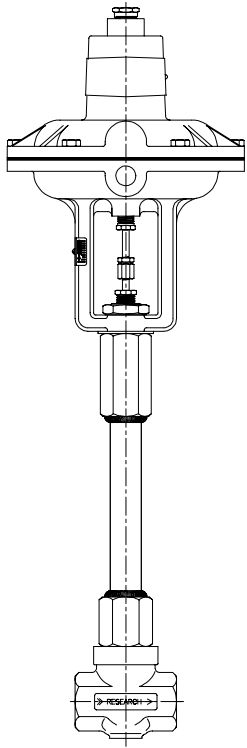
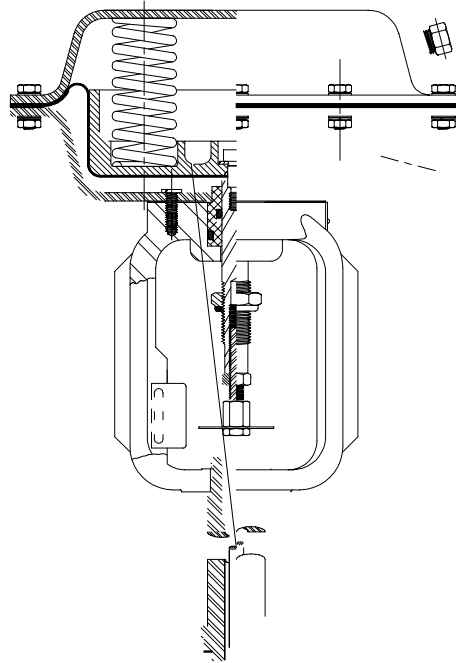


# Research Control® Valves Can Take the Cold



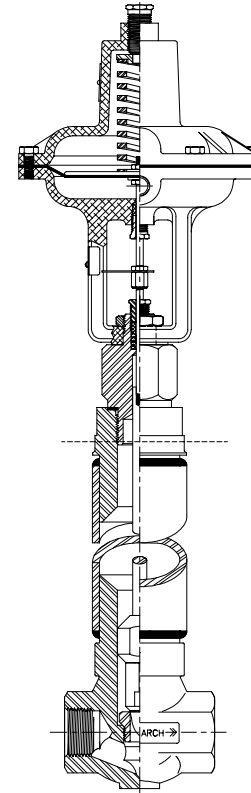
**Series 884**  
**Extension Bonnet**  
 Best Price and Delivery

Sizes: 1/4", 1/2", 3/4" and 1".  
 Pressures up to 2,500 psig (3/4"&1" 1500 psi).  
 Temperatures down to -450F.  
 Standard extension 14"  
 Standard end connection: NPT  
 Optional: Butt weld, Socket weld, Flanged



**Series 1711**  
**High Pressure Ext. Bonnet**  
 Highest Pressure, Rugged

Sizes: 1/2", 3/4" and 1".  
 Pressures up to 7,500 psig (3/4"&1" 5000 psi.)  
 Temperatures down to -450F.  
 Standard extension 14"  
 Standard end connection: NPT  
 Optional: Butt weld, Socket weld, Flanged



**Series CBX**  
**Cold Box Extension Body**  
 Easiest Trim Removal

Sizes: 1/2" and 1".  
 Pressures up to 2,300 psig (1" 1500 psi).  
 Temperatures down to -450F.  
 Standard extension 14"  
 Standard end connection: NPT  
 Optional: Butt weld, Socket weld, Flanged