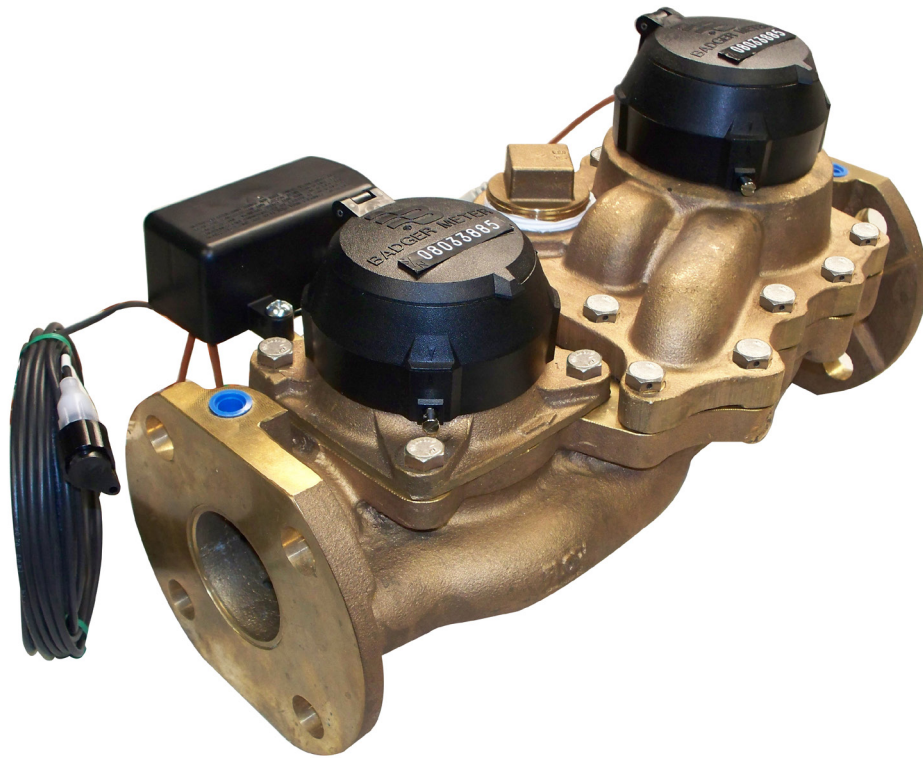




**Badger Meter**

**Recordall®**  
**308 Summator/Splitter Product**



**IMPORTANT:**  
**This manual contains important information.**  
**READ AND KEEP FOR REFERENCE.**



## Description

### Application/Operation

The latest version of the Summator/Splitter model is designed to work with the Badger Meter Recordall® Compound Series Meter. In all cases, connection takes place between the various components by the use of the Badger Meter 308 in-line connector. The 308 in-line connector provides flexibility in system selection, can be operated in a submersible environment and is tamper proof.

By utilizing the 308 Summator design, utility customers can easily connect to approved Badger Meter products. No tools or lubricant are required.

The Summator/Splitter is shipped for final connectivity in the field to a compatible ORION®, GALAXY® or ITRON® endpoint.

### Installation Instructions

The following instructions describe the connection process.

**Note:** Keep all parts clean prior to assembly. Any dirt or water within the connector enclosure can cause corrosion of the contacts, which reduces connector life.

### Input Cable

Each input cable is labeled as noted below for connectivity to the RTR.

Label	Meter Type	Connectivity
LOW FLOW	Compound or fire series assembly	Connect 308 in-line connector to low side RTR
HIGH FLOW	Compound or fire series assembly	Connect 308 in-line connector to high side RTR
Unlabeled	Single register meter	Connect 308 in-line connector to RTR

Refer to "Connecting the Input 308 In-line Connector to an RTR" on [page 5](#) for installation instructions.

### Output Cable

Each output cable is labeled as noted below for connectivity to an endpoint.

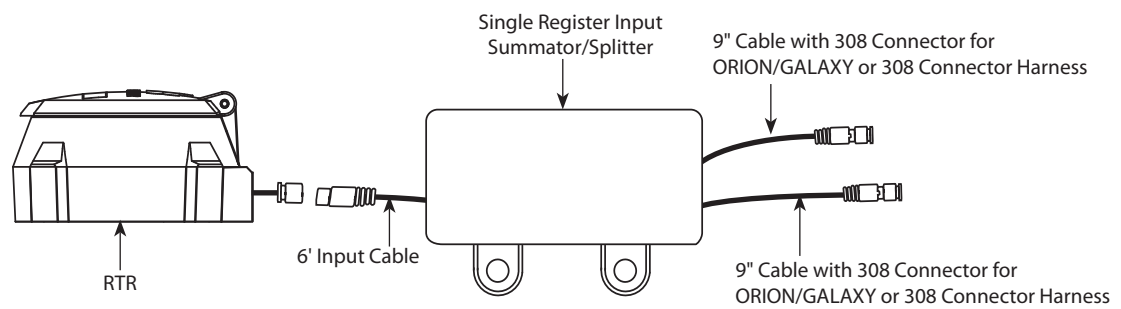
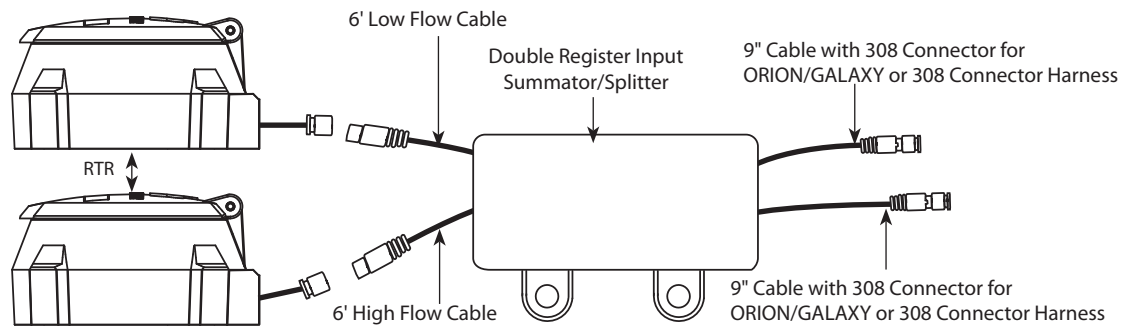
Label	Connector	Technology
OR/GA	308 in-line connector	ORION or GALAXY or 308 harness
ITRON	Itron in-line connector	Itron

Refer to "Connecting the Output 308 In-line Connector to an Endpoint" on [page 7](#) for installation instructions. If the Summator is being used to provide a single summed reading, either compatible output connection can be used to connect to the approved endpoint.

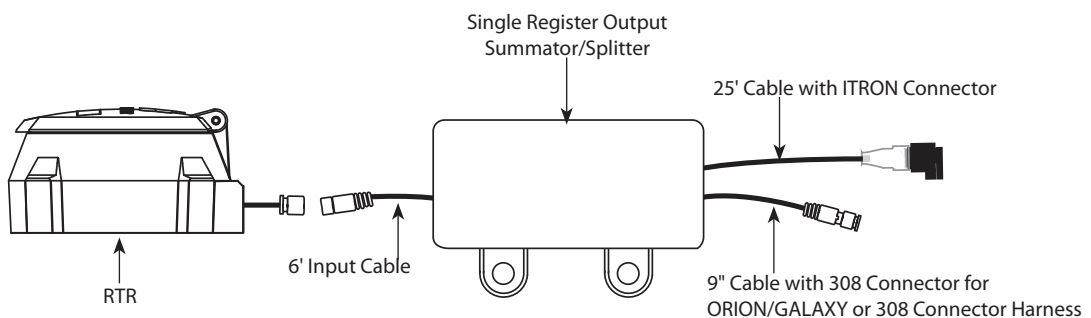
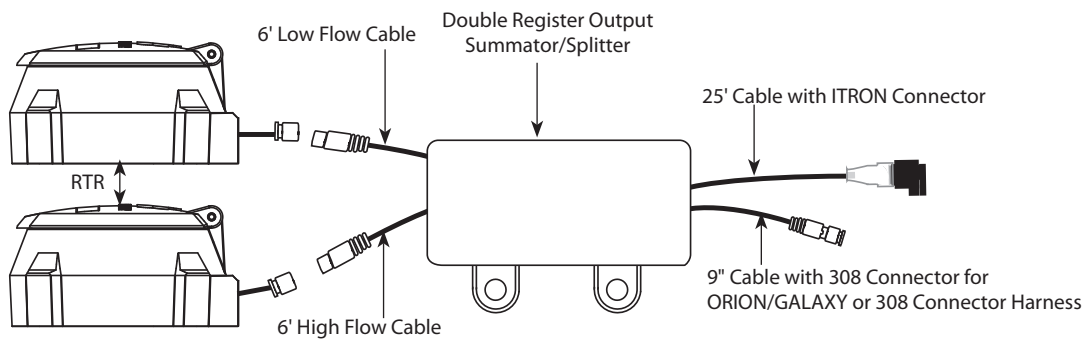
Drawings of the Summator/Splitter with connectors are on the following page.

## Summator/Splitter

### Summator/Splitter with 308 Connectors



### Summator/Splitter with Itron In-line Connectors



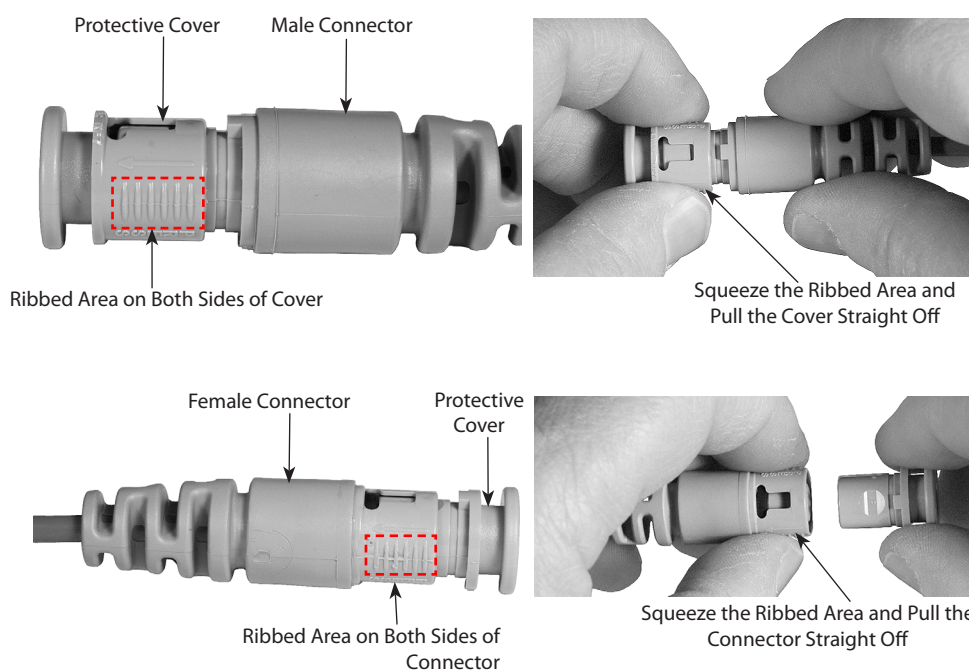
## Connecting the Input 308 In-line Connector to an RTR

To ensure the Badger Meter 308 in-line connector assembly is properly installed, follow these installation steps (pages 5 and 6):

**Note:** When installing a Summator product to a compound or fire series assembly, make sure the proper 308 in-line connector is assembled to the appropriate high or low side RTR. The 308 in-line connector cables have been labeled with either a "HIGH FLOW" or "LOW FLOW" tag to assist with proper installation. Make sure the low flow cable is connected to the low flow register on the unit and the high flow cable to the high flow register.

When connecting to a single register meter, make sure a single input Summator/Splitter is used.

1. Remove the waterproof protective cover from the connector by squeezing the ribbed areas of the connector together and pulling the cover straight off the assembly. The cover should be able to be removed from the connector using very little force.



If any of the following conditions exist, do not continue with the installation of the connector assembly.

- Damaged or missing seal
- Cut or nicked cable, providing a potential tamper

**Note:** The protective cover should be installed on the connector whenever it is not fully assembled to protect against moisture and debris.

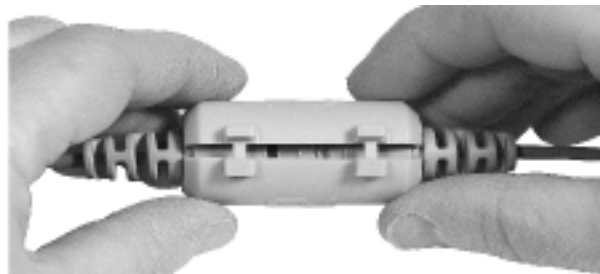
## Summator/Splitter

---

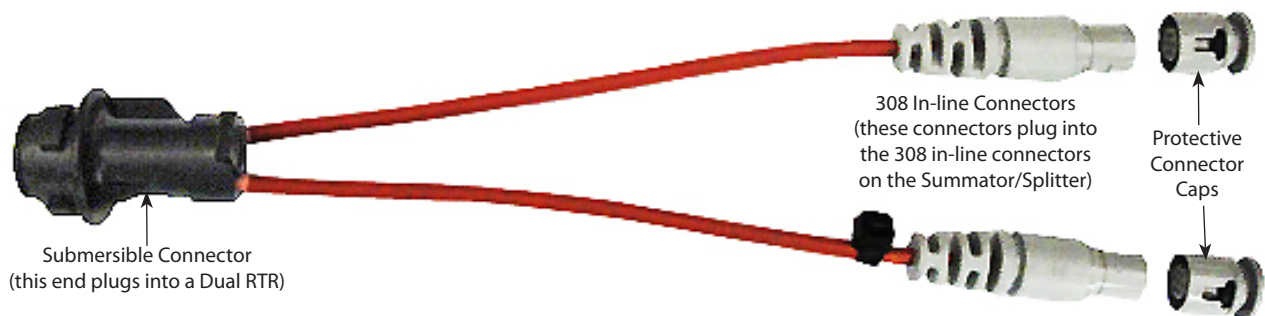
- To prevent the connectors from being installed incorrectly, each connector has been keyed so the two halves are correctly aligned. Align the male and female connector keys and gently push both together. While pushing the connector assemblies together, two audible clicks indicate complete connection.



- Position the anti-tamper collar (66233-004) over the connector and close it. The two tabs snap in place when the anti-tamper collar is fully engaged.



**Note:** When connecting the Summator/Splitter to a Dual RTR (for older style Recordall Compound Meters), you will also need the Submersible Connector to 308 Connector Jumper Harness. This cable allows customers to connect the Dual RTR that has a submersible connector to the input end of the Summator/Splitter which features the 308 in-line connector.



## Connecting the Output 308 In-line Connector to an Endpoint

Connector cables are labeled "OR/GA" to indicate compatibility with an ORION or GALAXY endpoint, or "ITRON" for an Itron in-line connector. Connect an endpoint to the appropriate cable using Steps 1-3, beginning on page 5.

**Note:** Anytime a connector is used (308 or Itron in-line connector), program the endpoint to clear the tamper and enter the correct reading from the register (into the endpoint) after all connections have been made. Refer to the appropriate handheld or mobile installation and operation manual for programming instructions.

For a flying lead, a 308 connector harness can be purchased for connection to the connector cables labeled "OR/GA." Refer to the appropriate endpoint Installation Data sheet if wiring an endpoint to the flying lead of a 308 harness.

## Disassembling a 308 In-line Connector

To disassemble a 308 in-line connector assembly, follow these steps:

1. Using a flat blade screwdriver, pry open the anti-tamper collar. Discard the anti-tamper collar, as it can be used only once.



2. Squeeze the connector on the two ribbed sides and pull apart. The connector assembly disengages with minimal force.

Recordall, RTR, ORION and GALAXY are registered trademarks of Badger Meter, Inc.

Other trademarks appearing in this document are the property of their respective entities.

© 2012 Badger Meter, Inc. All rights reserved.



Due to continuous research, product improvements and enhancements, Badger Meter reserves the right to change product or system specifications without notice, except to the extent an outstanding contractual obligation exists.

---

**Badger Meter | P.O. Box 245036, Milwaukee, Wisconsin 53224-9536**  
**800-876-3837 | [infocentral@badgermeter.com](mailto:infocentral@badgermeter.com) | [www.badgermeter.com](http://www.badgermeter.com)**