

DISPENSER SELECTION

Determining Dispenser Type

A. Interface Dispenser is designed to interface with Batching Panels or can be used with our Semi-Automatic Controllers. (AC-151, AC154, and ATC)

Shown below.

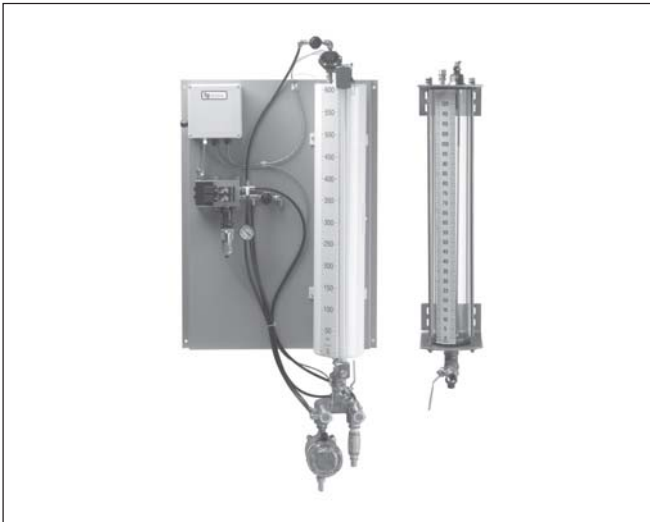
A. Interface Dispenser: (Optional visual verification - *MEASURE RITE*[®] site tube assembly)

B. Manual Dispenser: (Hand Operated Only)

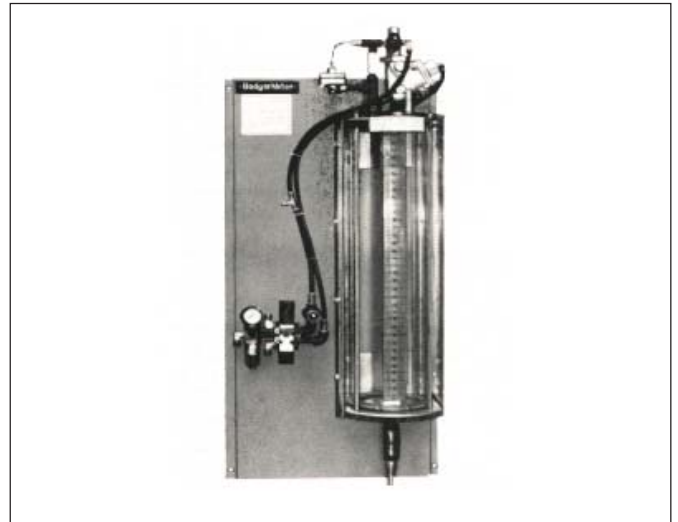
C. Direct Feed Dispensers: (No Visual Verification Required)

D. Controllers: (AC-151, AC-154)

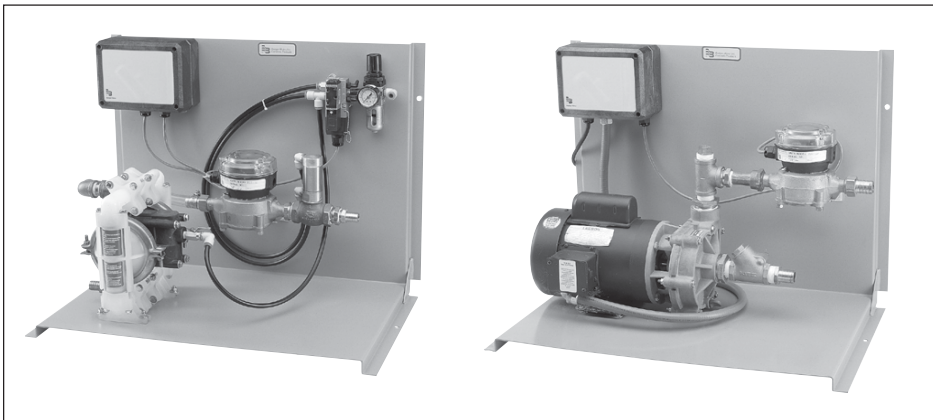
A. INTERFACE DISPENSER



B. MANUAL DISPENSER



C. DIRECT FEED DISPENSERS



C. DIRECT FEED DISPENSERS



ADMIXTURE DISPENSER SELECTION GUIDE

Configure Complete Dispenser system:

Note: Please make your selection from each sub-assembly group.

Completing each section, in order, will help the selection process.

#1- Select the desired number, size and type of measuring units.

#2- Add the number of required pressure head assemblies.

#3- Select the required meter/valve assembly for each selected measuring unit.

#4- Select the required solenoid valve assembly.

#5- Select the required DP-10 Interface unit.

#6- Select a mounting backplate or enclosure for the number of units.

#7- Select the type and size of your liquid supply vessel.

Example:

Required; 3 unit dispenser system to mount inside batch house and interface into PSI batch panel.

Measuring Unit Assemblies :

120 ounce Acrylic
600 ounce Acrylic
600 ounce Acrylic

Pressure Head Assembly:

Total of 3 required

Meter/Valve Assembly:

Total of 3 - 3/4" size

Solenoid Valve Assembly

Three unit assembly

DP-10 Interface:

Three unit assembly

Liquid Supply Vessel:

1/2" Air Diaphragm Pump Assembly
1" Air Diaphragm Pump Assembly

Backplate or Steel Enclosure

Select Type

PVC or Painted Plywood

PROPER SIZING AND SELECTION CHART INSTRUCTIONS

Proper sizing for visual verification.

Note: Proper sizing is very important if the unit is to meet your requirements.

Step #1- Know your minimum amount of admixture to be dosed.

Step #2-Know your maximum amount of admixture to be dosed.

Example:

Admixture - Water Reducer

Minimum dose based on 1 yard mix = 25 ounces

Maximum dose based on 10 yard mix = 250 ounces

Size of measuring required is 250 ounces x 120 % = 300 ounces. Refer to Selection Chart below.

Direct Feed Dispenser Sizing:

Step # 1 - Determine flow rate requirements.

Step # 2 - Total feet of head.

Step # 3 - Weight per gallon. (Consult factory now)

Selection Chart:

Acrylic Sizes

Available:

30 ounce
60 ounce
120 ounce
240 ounce
350 ounce
600 ounce
950 ounce
1425 ounce
1900 ounce

Stainless Steel

Sizes Available:

346 ounce
597 ounce
1131 ounce
1475 ounce
1895 ounce
3000 ounce

Stainless Steel

ASME

Sizes Available:

130 ounce
250 ounce
400 ounce
600 ounce
1130 ounce
1530 ounce
1900 ounce
3800 ounce

Note: All steel tanks are available in 1 color only - White. Additionally, an optional visual verification *MEASURE RITE*® site tube assembly is available. Consult factory.

Direct Feed Dispensers On Hand.

(Other Options Available, Consult Factory)

1/4" air diaphragm pump. Direct Feed Dispensers (Electric)
1/2" air diaphragm Starting from 1/4" in size.
1" air diaphragm **Note: Consult Factory**

COMPONENT SELECTION CHART

SELECT YOUR REQUIRMENTS BELOW

Measuring Unit Assemblies;

QTY	PART NO.	DESCRIPTION
_____	255091	30 Oz. Acrylic
_____	255093	55 Oz. Acrylic
_____	255102	120 Oz. Acrylic
_____	255103	240 Oz. Acrylic
_____	255104	350 Oz. Acrylic
_____	255105	600 Oz. Acrylic
_____	255106	950 Oz. Acrylic
QTY	PART NO.	DESCRIPTION
_____	255108	1900 Oz. Acrylic

_____	255095-0002	346 Oz.304 SS White
_____	255096-0002	597 Oz.304 SS White
_____	255097-0002	1000 Oz 304 SS White
_____	255098-0002	1475 Oz 304 SS White
_____	255099-0002	1895 Oz 304 SS White
_____	255165	3000 Oz 304 SS White

_____	255300-0001	130 Oz ASME SS White
_____	255301-0001	250 Oz ASME SS White
_____	255302-0001	400 Oz ASME SS White
_____	255303-0001	600 Oz ASME SS White
_____	255304-0001	1130 Oz ASME SS White
_____	255305-0001	1530 Oz ASME SS White
_____	255306-0001	1900 Oz ASME SS White
_____	255307-0001	3800 Oz ASME SS White

Pressure Head Assemblies;

QTY	PART NO.	DESCRIPTION
_____	253357	Interface
_____	253356	Manual

Requires 1 per measuring unit:

Standard Direct Feed Dispensers;

QTY	PART NO.	DESCRIPTION
_____	255012	1/4" Diaph. Pump
_____	255011	1/2" Diaph. Pump
_____	255013	1" Diaph. Pump
_____	255026-2222	1-1/2" Pump/Electric

For Special Requirements Consult Factory

Standard Dispenser Controllers;

QTY	PART NO.	DESCRIPTION
_____	255188	1 Product (AC-151)
_____	255131	4 Product (AC-154)
_____	255130-1000	1 Product (ATC)
_____	255130-1100	1 Product (ATC with Remote Start)
_____	255130-1200	1 Product (ATC with Run/Hold Switch)

Mtr/Vlv Assemblies;

QTY	PART NO.	DESCRIPTION
_____	257007	30 Oz to 600 Oz Interface - Viton
_____	257008	600 Oz to 30 Gal. Interface - Viton
_____	257007-0001	30 Oz to 600 Oz Interface - Teflon
_____	257008-0001	600 Oz to 30 Gal. Interface - Teflon

Electrical Assemblies;

_____	255107	1425 Oz. Acrylic
_____	255123	Single product DP-10
_____	250627	2 Product DP-10
_____	250620	3 Product DP-10
_____	250617	4 Product DP10

If more than 4 products are required please consult factory:

Solenoid Valve Assemblies;

QTY	PART NO.	DESCRIPTION
_____	255146	Single Product Valve Assembly
_____	255147	2 Product Valve Assembly
_____	255148	3 Product Valve Assembly
_____	255149	4 Product Valve Assembly

If more than 4 products are required please consult factory:

Specify Type of Mount;

_____	Enclosure w/Window-Fram
_____	PVC Backplate (Type 1,1/2" Thick)
_____	Plywood (Painted White 3/4")
_____	Steel (For single Products only)

For Special sizes please consult factory

Dispenser Options;

_____	C/F	Top Discharge (Interface Dispenser)
_____	C/F	Line Empty (Interface Dispenser)
_____	C/F	Dual Fill (Interface Dispenser)
_____	C/F	Dual Discharge (Interface Dispenser)

For Special Requirements Please Contact Factory

Liquid Supply Options

QTY	PART NO.	DESCRIPTION
_____	253024	1/2" Air Diaphragm Pump Assembly
_____	253025	1" Air Diaphragm Pump Assembly

QTY	PART NO.	DESCRIPTION
-----	----------	-------------

Controller Options;

_____	C/f	Delay Discharge(ATC)
_____	C/f	A/B Switch (AC-154)

Truck Mount Dispensers;

QTY	PART NO.	DESCRIPTION
_____	253022	9 Gal Vertical
_____	253674	9 Gal Horizontal
_____	253022-0001	9 Gal Vertical ASME

On Site Direct Feed Dispenser;

QTY	PART NO.	DESCRIPTION
_____	255029	1-1/2" Pump/Electric Dolly mounted with ATC Controller

ADMIXTURE DISPENSER CONFIGURATOR CHART

Configure Complete Dispenser System Below:

Bottle Sizes:	Type:	Color:
Bottle #1 _____	_____	_____
Bottle #2 _____	_____	_____
Bottle #3 _____	_____	_____
Bottle #4 _____	_____	_____
Bottle #5 _____	_____	_____

Type of Mount: _____

Po # If Required: _____

Ordered By: _____

Please indicate any special requirements or instructions below.

Configure Your System Below As You Would Have It Laid Out:

MEASURE RITE® is a registered trademark of Badger Meter, Inc.

Please see our website at
www.badgermeter.com
for specific contacts.

Copyright © Badger Meter, Inc. 2007. All rights reserved.

Due to continuous research, product improvements and enhancements, Badger Meter reserves the right to change product or system specifications without notice, except to the extent an outstanding bid obligation exists.



BadgerMeter, Inc.

6116 East 15th Street, Tulsa, OK 74112

Telephone: (800) 364-9876 / Fax: (918) 832-9962

www.badgermeter.com