

BadgerTouch™ Automated Meter Reading System

BadgerTouch™ Remote Module

Installation Data

REQUIRED TOOLS

62658-000 TORX® Screw Driver (10 and 15 bits)

REQUIRED MATERIAL

62919-001 BadgerTouch™ Installation Kit (with TORX), including:
(4) 59761-001 Gel-Connectors
(2) 34776-001 Cable Ties

OR

62919-006 BadgerTouch Installation Kit (without TORX), including:
(4) 59761-001 Gel-Connectors
(2) 34776-001 Cable Ties
(2) 16279-001 Seal
(1) 26017-009 Seal Wire
(1) 26017-005 Seal Wire

Belden 9770 wire (if additional wire length required).

SUGGESTED TOOLS

59983-001 Gel Splice Crimping Tool
59989-001 Coax Stripper
59991-001 Wire Cutting Pliers

IDENTIFICATION

Badger Meter BadgerTouch Remote Modules are supplied as stand-alone modules for field connection to the Absolute Digital Encoder (ADE™) for all Recordall® Disc, Turbo Series and Compound Meters. The BadgerTouch Remote Module can be identified by an eight-digit unique identification number located on the underside of the ADE lid. Each ADE is clearly identified on the face of the dial with an assembly number, unit of measure and meter model number (see Figure 1).

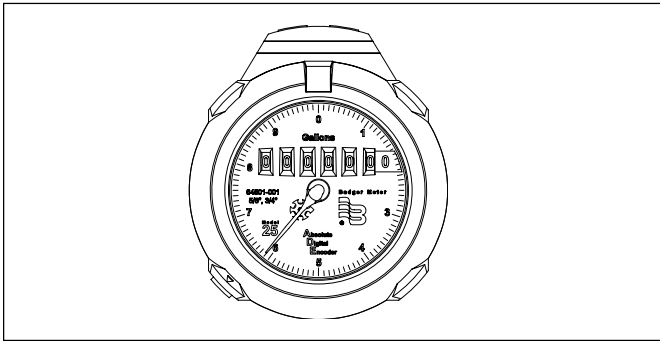


Figure 1. Identification - Absolute Digital Encoder

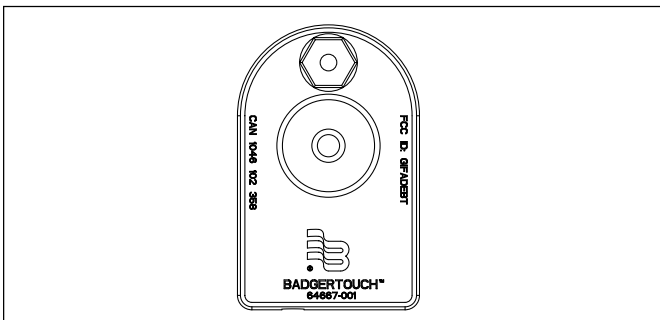


Figure 2. BadgerTouch Remote Module - Front View

INSTALLATION

UNPACKING

Carefully remove the BadgerTouch Remote Module from the shipping carton and inspect the enclosure to ensure that the module cover, mounting plate, and seal screw are in place. Locate the corresponding ADE for proper coordination during installation. Retain the contents of the installation kit for use in making connections to the ADE transmission line.

LOCATION

The location of the BadgerTouch Remote Module should be selected by the utility to achieve on-site reading in an efficient manner. The remote module should be mounted at waist level for easy access under any environmental conditions.

REMOTE MODULE INSTALLATION

The remote module contains (2) two wires, each approximately 8" in length, that require connection to the red and black wires of the ADE cable. The BadgerTouch system is not polarity sensitive.

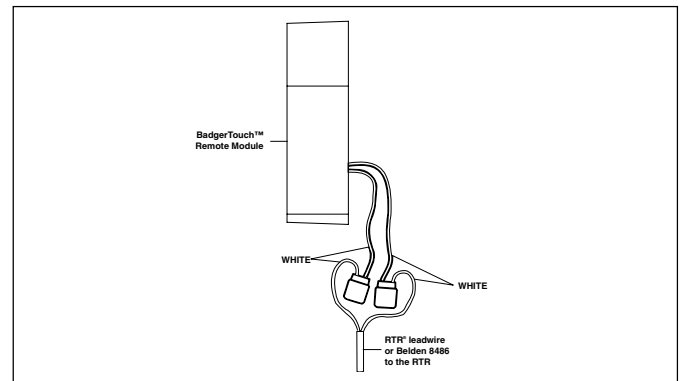


Figure 3. Remote Module Connection

Locate mounting hole on outside wall of building. Remote Module should be located at arm's length in an easily accessible location. Maximum distance is 75 feet with Belden 9770 wire.

Drill a 3/16" wire entry hole at a suitable location in the building wall. Feed Belden 9770 through the hole in the wall to route to water meter. Cut wire to proper length, making sure that sufficient wire for connection to the ADE at the meter is allowed.

Strip approximately 1/2" of insulation of the red and black wires. The green wire is not used. Place the modules red wire into one position of the first gel splice connector; place one wire from Belden 9770 into second position. Firmly apply pressure on the splice using the parallel pliers (59983-001). Repeat this procedure for the black wire.

Once gel splicing has been successfully completed, the splices should be tucked inside the housing. Note: The gel spliced connections should not be exposed when the installation is complete.

Secure module to wall with appropriate attaching hardware. The module must be securely mounted to a rigid surface. Avoid mounting on loose siding of any type as this will lead to wire breakage.

TESTING

After all connections have been made from the remote module to the remote cable and from the remote cable to the ADE, the testing of the complete BadgerTouch remote system can begin. To perform the test, the Symbol handheld data collector can be used. The reading unit should be placed on the remote module and the meter reading collected. This should correspond to the reading on the meter odometer stack.

LICENSE REQUIREMENTS

The device complies with Part 15 of the FCC Rules. Operation of this device is subject to the following two conditions: (1) this device may not cause harmful interference, and (2) this device must accept any interference received, including interference that may cause undesired operation. Any changes made by the user not approved by Badger Meter can void the user's authority to operate the equipment. No license is required by the utility to operate a BadgerTouch Meter Reading System.

Recordall®, RTR® and Read-o-Matic® are registered trademarks of Badger Meter, Inc. TORX® is a registered trademark of Camcar, Division of Textron, Inc. ADE™ and BadgerTouch™ are trademarks of Badger Meter, Inc.



Please see our website at
www.badgermeter.com
for specific contacts.

Due to continuous research, product improvements and enhancements, Badger Meter reserves the right to change product or system specifications without notice, except to the extent an outstanding bid obligation exists.



BadgerMeter, Inc.

P.O. Box 245036, Milwaukee, WI 53224-9536
(800) 876-3837 / Fax: (888) 371-5982

www.badgermeter.com