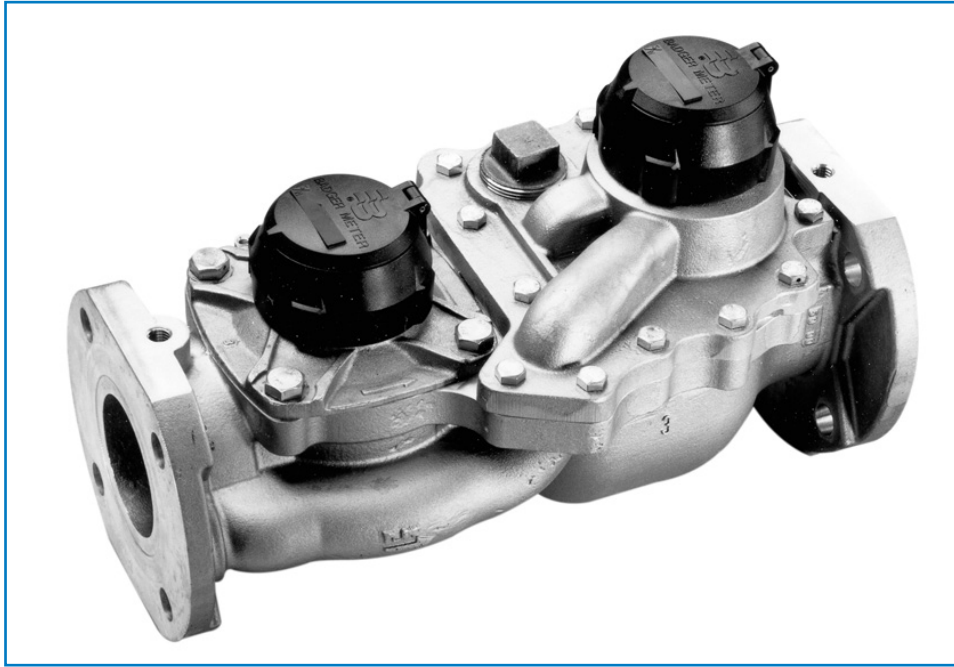
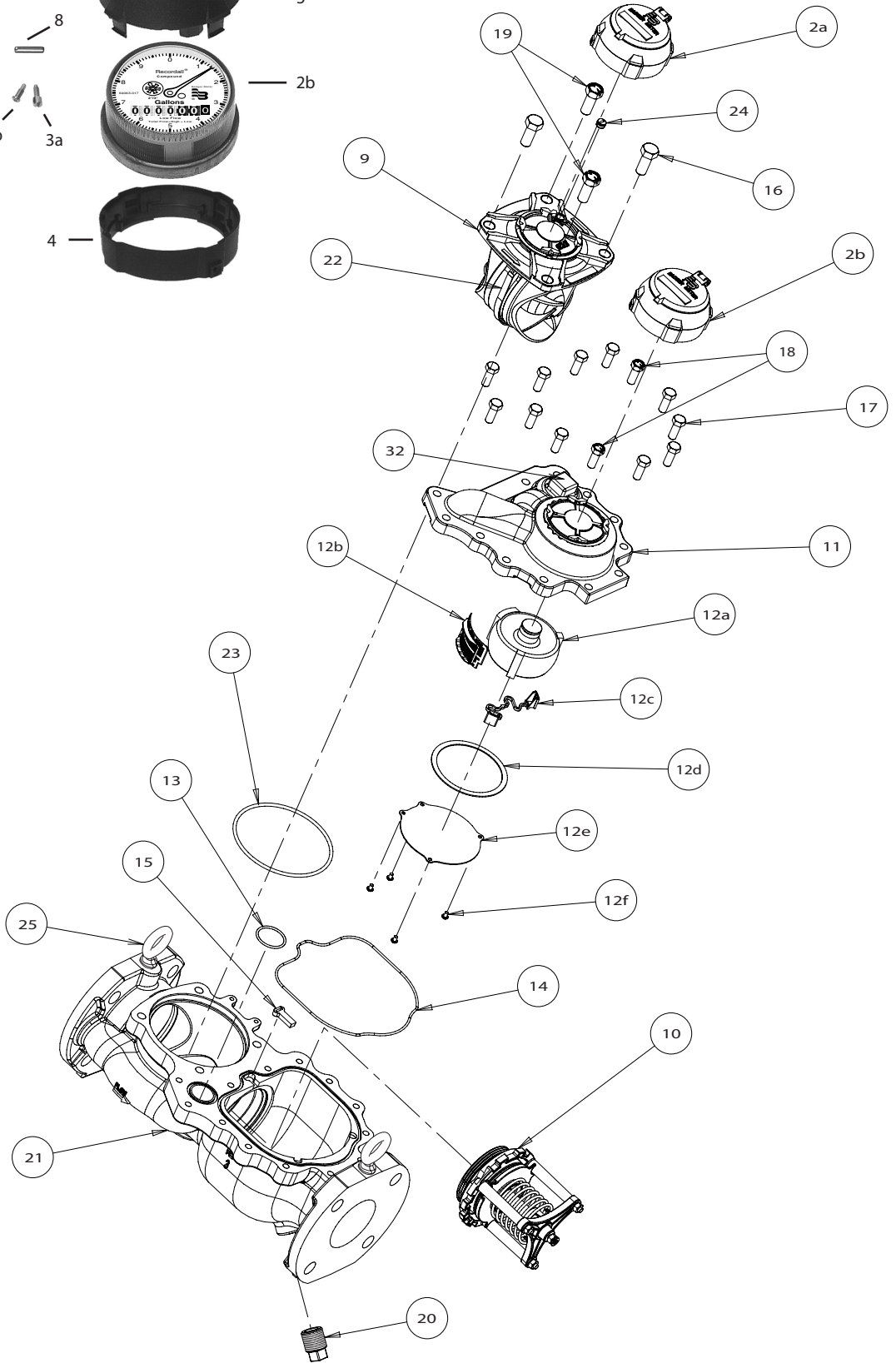
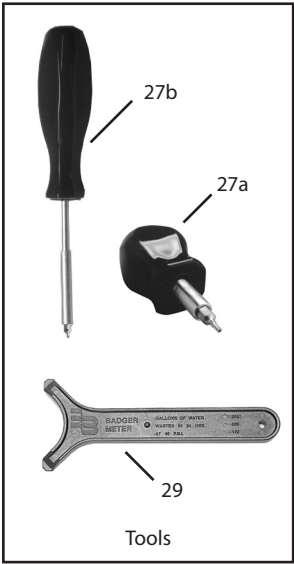
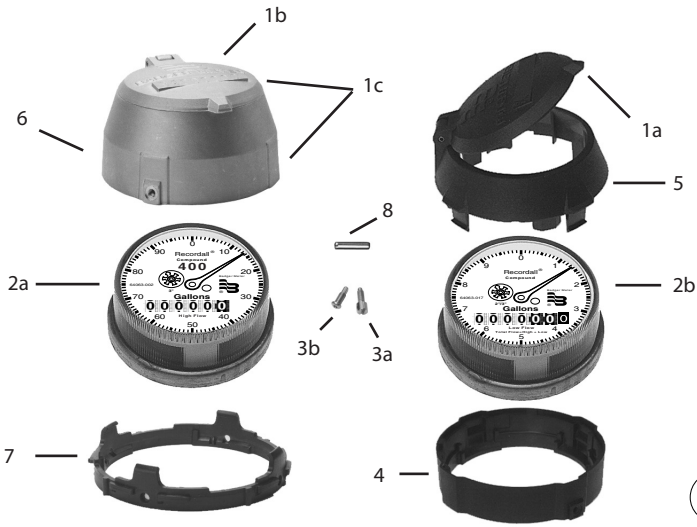




Badger Meter

Recordall®
Compound Series Meter
Sizes 2", 3", 4", and 6"





ITEM	DESCRIPTION	2"	3"	4"	6"
1a	Flat Lid (Plastic)	62278-001	62278-001	62278-001	62278-001
1b	Flat Lid (Bronze)	62353-001	62353-001	62353-001	62353-001
1c	Flat Lid and Shroud (Bronze)	62616-001	62616-001	62616-001	62616-001
2a	High Flow Register, 100 Gal. T. C.	64063-001	64063-002	64063-003	-----
2a	High Flow Register, 10 Cubic Ft. T.C.	64063-005	64063-006	64063-007	-----
2a	High Flow Register, 1 Cubic Meter T. C.	64063-009	64063-010	64063-011	-----
2a	High Flow Register, 1000 Gal. T.C.	-----	-----	-----	64063-004
2a	High Flow Register, 100 Cubic Ft. T.C.	-----	-----	-----	64063-008
2a	High Flow Register, 10 Cubic Meter T.C.	-----	-----	-----	64063-012
2b	Low Flow Register, 10 Gal. T.C.	64063-017	64063-017	64063-018	64063-018
2b	Low Flow Register, 1 Cubic Ft. T.C.	64063-019	64063-019	64063-020	64063-020
2b	Low Flow Register, 0.1 Cubic Meter	64063-021	64063-021	64063-022	64063-022
3a	Screw Tamper-resistant, standard	62335-001	62335-001	62335-001	62335-001
3b	Tamper Resistant TORX® Seal Screw	62516-001	62516-001	62516-001	62516-001
4	Plastic Shroud (Bottom Half)	62279-001	62279-001	62279-001	62279-001
5	Plastic Shroud (Top Half)	62280-001	62280-001	62280-001	62280-001
6	Bronze Shroud (For Flat Lid)	62442-001	62442-001	62442-001	62442-001
7	Pls. Insert for Flat Lid Brz. Shroud	62455-001	62455-001	62455-001	62455-001
8	Flat Lid Hinge Pin	59568-003	59568-003	59568-003	59568-003
9a	Head Assembly Turbo (81 Metal)	63010-002	63010-003	63010-004	63010-005
9b	Head Assembly Turbo (LL)	63010-025	63010-026	63010-027	63010-028
10	Valve Assembly	64128-001	64066-001	64131-001	64134-001
	Door Seal - Valve Assembly (Not Illustrated)	64075-001	64075-002	-----	-----
11a	Machined Cover (81 Metal)	64107-001	64070-001	64111-001	64115-001
11b	Machined Cover (LL)	64107-003	64070-003	64111-003	64115-003
12a	Chamber Assembly	33334-023	33334-023	33334-056	33334-056
12b	Screen	64081-001	64081-001	64142-001	64142-001
12c	Chamber Strap	58540-001	58540-001	58540-001	58540-001
12d	Gasket	11071-033	11071-033	59782-001	59782-001
12e	Cover Plate	64080-001	64080-001	64141-001	64141-001
12f	Screw	55115-001	55115-001	55115-002	55115-002
13	O-Ring EPDM,	64083-006	64083-002	64083-008	64083-010
14	O-Ring EPDM,	64083-007	64083-003	64083-009	64083-011
15	Lock Pawl	64078-001	64078-001	64078-001	64078-001
16	Bolt Hex. Hd.	55031-060	55031-116	55031-116	55031-117
17	Bolt Hex. Hd.	55031-060	55031-060	55031-116	55031-117
18	Seal Bolt Hex. Hd.	25421-043	25421-043	25421-034	25421-044
19	Seal Bolt Hex. Hd.	25421-043	25421-034	25421-034	25421-044
20	Drain Plug	33879-015	33879-015	33879-015	33879-015
21	Housing (Round Flanges) (81 Metal)	64105-001	64068-001	64109-001	64113-001
21a	Housing (Round Flanges) (LL)	64105-003	64068-009	64109-005	64113-005
21b	Housing (Elliptical Flanges) (81 Metal)	64127-001	-----	-----	-----
21c	Housing (Elliptical Flanges) (LL)	64127-003	-----	-----	-----
22	Cage Seal	62924-001	62924-002	62924-002	62924-003
23	O-Ring	62754-002	62754-003	62754-003	62754-004
24	Calibration Plug	62793-001	62793-001	62793-001	62793-001
25	Lifting Ring (optional)	62736-001	62736-001	62736-001	62736-001
26	Dummy Cover Plate (Not Illustrated)	63190-001	63190-001	63194-001	63194-001
27a	Torx Seal Screw Driver and Bit (Stubby)	62658-001	62658-001	62658-001	62658-001
27b	Torx Seal Screw Driver and Bit (Long)	62658-003	62658-003	62658-003	62658-003
28	Torx Seal Screw Driver Bit (Not Illustrated)	62657-001	62657-001	62657-001	62657-001
29	Plastic Shroud Disassembly Tool	62346-001	62346-001	62346-001	62346-001
30	Flange Adapter Kit (2" Elliptical Fl.)	64186-001	-----	-----	-----
30	Flange Adapter Kit (Round Fl.)	64186-002	-----	64186-003	-----
31	Door Seal Replacement Tool Kit	64201-001	64201-001	-----	-----
32	Test Plug	33879-014	33879-014	33879-012	33879-012

Recordall® is a registered trademark of Badger Meter, Inc.

© 2012 Badger Meter, Inc. All rights reserved.



Due to continuous research, product improvements and enhancements, Badger Meter reserves the right to change product or system specifications without notice, except to the extent an outstanding contractual obligation exists.

Badger Meter | P.O. Box 245036, Milwaukee, Wisconsin 53224-9536
800-876-3837 | infocentral@badgermeter.com | www.badgermeter.com