

DESCRIPTION

APPLICATION: Badger Meter Read-o-Matic pit generator registers are designed for meter pit and vault locations that are subject to submergence. The visual read remote register is to be placed in a location that is not subjected to submergence. The pit generator is designed for use with Badger Recordall® and Easy-Read® meters. Each pit generator and remote register is identified on the face plate (dial) with an assembly number and the unit of measure.

The standard Read-o-Matic system is to be installed in locations not subjected to submergence.

UTILITY IMPACTS: Badger Meter Read-o-Matic generators and visual read remote registers significantly improve meter reading productivity. Depending upon conditions, reading productivity can range from 300 to 600 reads per day.

When used with a handheld reading device, such as the MC-V™, meter route information readings and billings can be processed electronically.

A visual remote combined with a handheld data collector provides the utility with the least cost method of obtaining inside readings until a radio or phone reading system can be cost justified.

OPERATION: The pit generator is mounted to the meter through the use of a seal screw to prevent tampering. The Read-o-Matic pit generator is supplied with an optional length of lead wire completely connected and factory sealed. A Field Splice Kit is supplied for connection of the pit generator lead wire to the remote register two conductor wire. The pit generator is self powered by the flow of water through the meter and therefore requires no outside power source. Registration is transferred through an electrical signal to a solenoid in the outside register for each unit of measure.

OPERATING PERFORMANCE: The Badger Read-o-Matic system meets AWWA Standard C706 for direct-reading remote registration systems. Read-o-Matic is a closed system with no switches or contact points.

MAGNETIC DRIVE: Direct magnetic drive, through the use of high-strength magnets, provides positive, reliable and dependable register coupling. There is no reflected torque load on generator or water meter.

TAMPER-PROOF FEATURES: Customer removal of the generator/register to obtain free water can be prevented when the tamper detection seal wire is used. Seal wire, seals, and seal screws are provided for the generator and remote register. Optional Torx® seal screws are available.

SEALED REGISTER: The generator register consists of a straight-reading odometer-type totalization display, 360° test circle with sweep hand, and low flow indicator. Register gearing consists of self-lubricating thermoplastic gears to minimize friction and provide long life. Permanent sealing eliminates dirt, moisture, tamper and lens fogging problems. Multi-position register simplifies meter installation and reading. Generator is removable from the meter without disrupting water service.

MAINTENANCE: To simplify maintenance, Badger's Read-o-Matic generator can be removed without removing the meter housing from the installation.

The Read-o-Matic generator and Model 570 remote register are supplied with easy to read NAMEL font number wheels. This font selection provides the meter reader with optimum number wheel readability. The number wheel stack on the Badger Model 570 Read-o-Matic outside register may be reset without the use of special tools.



SPECIFICATIONS

GENERATOR/REGISTER: Straight reading, sealed magnetic drive, self-powered pulse generator.

Temperature 32°F to 110°F

Unit of Measure U.S. Gallons, Cubic Feet, Cubic Meters, clearly identified on register face.

Number Wheels Six with 3/16" high numerals.

Test Circle 360° circle with sweep hand. Ten major increments with five divisions each.

570 REMOTE REGISTER: Straight reading, electrically actuated from generator/register, weather resistant housing.

Temperature -40°F to 150°F

Unit of Measure U.S. Gallons, Cubic Feet, Cubic Meters, clearly identified on register face.

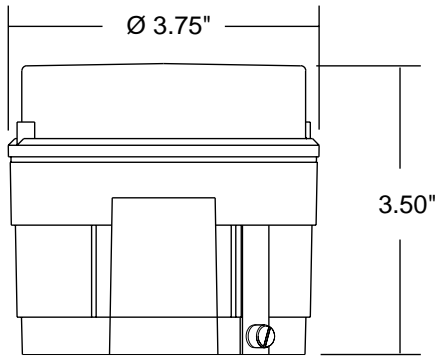
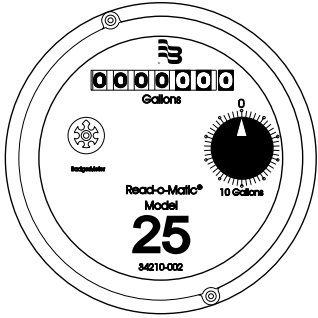
Number Wheel Five 3/16" high numerals

Construction High impact thermoplastic, weather and UV resistant. Corrosion resistant terminals and seal screws

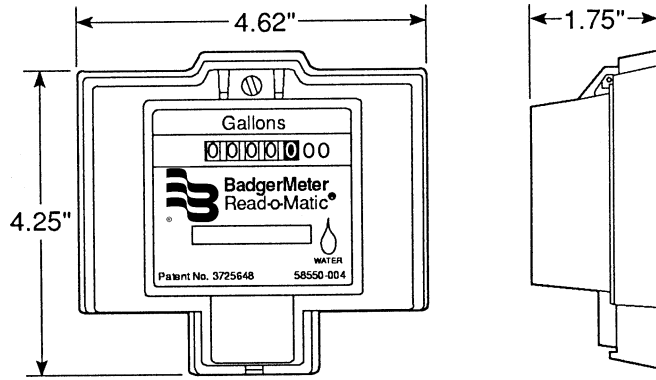


DIMENSIONS

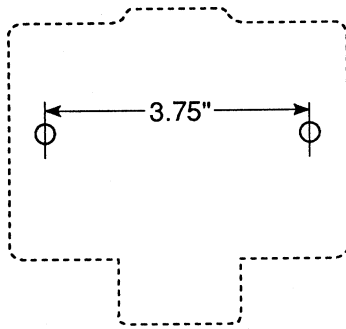
GENERATOR/REGISTER



REMOTE REGISTER



MOUNTING HOLE LOCATIONS



OPTIONAL BACKING PLATE

METER APPLICATIONS FOR READ-O-MATIC

Type of Meter	Sizes
Recordall Disc (Plastic Housing) Models 15, 25, 40	5/8", 5/8" x 3/4", 3/4" and 1"
Recordall Disc (Bronze Housing) Models 15, 25, 35, 40, 70, 120, 170, 180	5/8", 5/8" x 3/4", 1", 1 1/2" and 2"
Recordall Bronze Top Load Disc	1 1/2" and 2"
Recordall Turbo	2", 3", 4" and 6"
Recordall II Turbo	2" - 20"
Easy-Read Turbine	8", 10" and 12"
Recordall Compound	2", 3", 4" and 6"
Easy-Read Compound	6", 8" and 10"

WIRE SIZE AND DISTANCE CHART

Required Wire Run From Generator To Remote in Feet	Minimum Wire #
0 — 625	19
625 — 800	18
800 — 1000	17
1000 — 1250	16
1250 — 1600	15
1600 — 2000	14
2000 — 2500	13
2500 — 3250	12
3250 — 4000	11
4000 — 5000	10

Easy-Read®, Read-o-Matic® and Recordall® are registered trademarks of Badger Meter, Inc.
 Torx® is a registered trademark of Camcar, Division of Textron, Inc.
 MC-V™ is a trademark of Corvallis Micro Technology, Inc.

Due to continuous research, product improvements and enhancements, Badger Meter reserves the right to change product or system specifications without notice, except to the extent an outstanding bid obligation exists.



Please see our website at www.badgermeter.com for specific regions and contacts.



BadgerMeter, Inc.

P.O. Box 245036, Milwaukee, WI 53224-9536
 (800) 876-3837 / Fax: (414) 371-5980
www.badgermeter.com